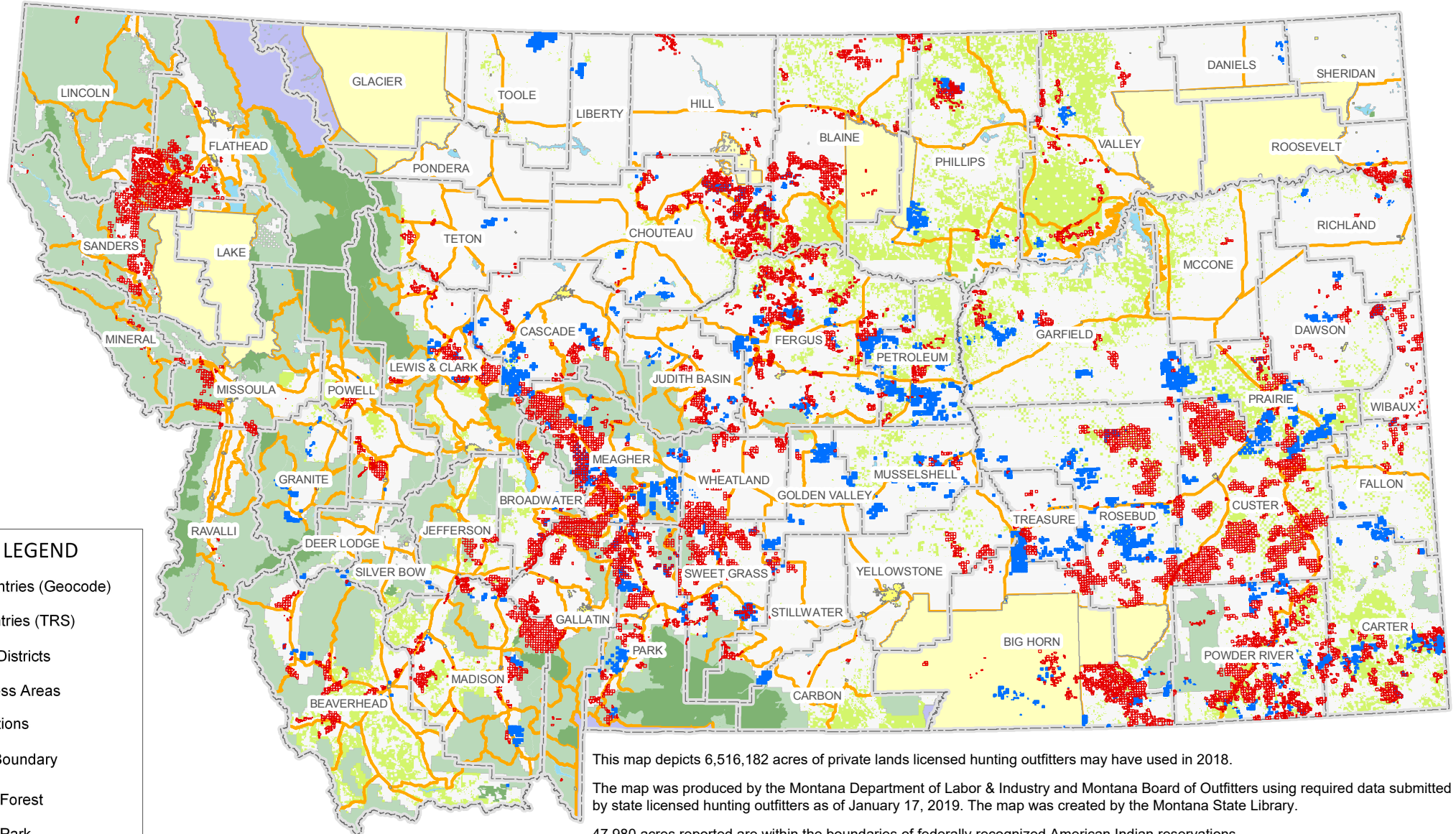


Reported Private Land Usage: Licensed Hunting Outfitters in Montana



MAP LEGEND

- Parcel Entries (Geocode)
- PLSS Entries (TRS)
- Hunting Districts
- Wilderness Areas
- Reservations
- County Boundary
- National Forest
- National Park
- Bureau of Land Management
- Lakes
- Private

This map depicts 6,516,182 acres of private lands licensed hunting outfitters may have used in 2018.

The map was produced by the Montana Department of Labor & Industry and Montana Board of Outfitters using required data submitted by state licensed hunting outfitters as of January 17, 2019. The map was created by the Montana State Library.

47,980 acres reported are within the boundaries of federally recognized American Indian reservations.

Acreage is reported in parcels no less than 40 acres (quarter by quarter sections). Actual acreage usage may be less than reported.

Acreage reported may be restricted or non-restricted depending on the type of game outfitters are allowed to pursue by landowners.

Private land usage by outfitters is not necessarily exclusive and may be shared with other members of the public. The lease holdings reported in the map above include at least 366,092 acres of privately-held timberland which is still open to public access.

For more information about outfitter land usage or to download a copy of the map visit Outfitter.mt.gov.